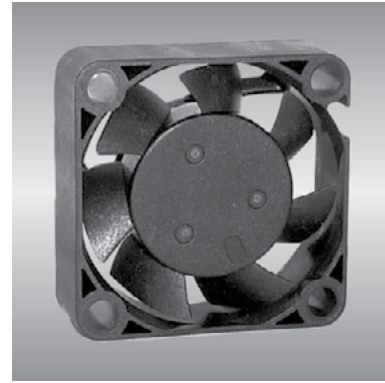


# 30 AG series

x30x10mm



## General Specifications

- Motor : 4 Poles brushless DC motor
- Frame & Impeller : Plastic(UL 94V-0)
- Storage temperature : -40° to +75°
- Operating temperature : -10° to +70°

## Major Characteristic Parameters

Model	*Bearing System	Rated Voltage	Operating Voltage Range	Rated Current	Rated Speed	Maximum Air Flow		Maximum Static Pressure		Sound Level	Weight
Part NO.	B / S / F	V	V	A	RPM	m <sup>3</sup> /min	CFM	mm-H <sub>2</sub> O	In-H <sub>2</sub> O	dBA	g
AGE03010_05L	B / S / F	5	4.5~5.5	0.06	6000	0.08	2.99	2.33	0.09	17.0	8
AGE03010_12L	B / S / F	12	7.0~13.2	0.03	6000	0.08	2.99	2.33	0.09	17.0	8
AGE03010_05M	B / S / F	5	4.5~5.5	0.08	7500	0.11	3.73	3.65	0.14	24.0	8
AGE03010_12M	B / S / F	12	7.0~13.2	0.05	7500	0.11	3.73	3.65	0.14	24.0	8
AGE03010_05H	B / S / F	5	4.5~5.5	0.10	9000	0.13	4.48	5.25	0.21	29.0	8
AGE03010_12H	B / S / F	12	7.0~13.2	0.07	9000	0.13	4.48	5.25	0.21	29.0	8
AGE03010_05U	B / S / F	5	4.5~5.5	0.14	11000	0.16	5.65	6.15	0.24	31.0	8
AGE03010_12U	B / S / F	12	7.0~13.2	0.09	11000	0.16	5.65	6.15	0.24	31.0	8

\*Bearing system B: Two Ball Bearing F: Fluid Bearing S: Sleeve Bearing

