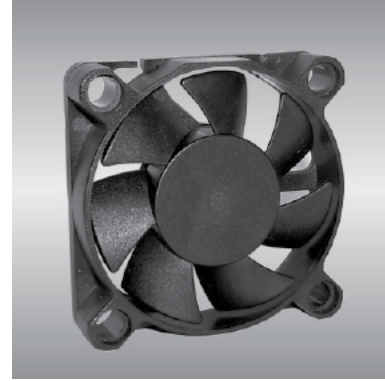


45 AG series

x45x10.5mm



General Specifications

- Motor : 4 Poles brushless DC motor
- Frame & Impeller : Plastic(UL 94V-0)
- Storage temperature : -40° to +75°
- Operating temperature : -10° to +70°

Major Characteristic Parameters

Model	*Bearing System	Rated Voltage	Operating Voltage Range	Rated Current	Rated Speed	Maximum Air Flow		Maximum Static Pressure		Sound Level	Weight
Part NO.	B / S / F	V	V	A	RPM	m ³ /min	CFM	mm-H ₂ O	In-H ₂ O	dB(A)	g
AGE04510_12L	B / S	12	7.0~13.2	0.08	3800	0.17	5.8	1.4	0.06	19.0	17
AGE04510_24L	B / S	24	14.0~26.4	0.05	3800	0.17	5.8	1.4	0.06	19.0	17
AGE04510_12M	B / S	12	7.0~13.2	0.10	4500	0.20	7.0	1.8	0.07	22.0	17
AGE04510_24M	B / S	24	14.0~26.4	0.07	4500	0.20	7.0	1.8	0.07	22.0	17
AGE04510_12H	B / S	12	7.0~13.2	0.12	5500	0.25	8.7	2.6	0.10	28.0	17
AGE04510_24H	B / S	24	14.0~26.4	0.08	5500	0.25	8.7	2.6	0.10	28.0	17

*Bearing system B: Two Ball Bearing F: Fluid Bearing S: Sleeve Bearing

