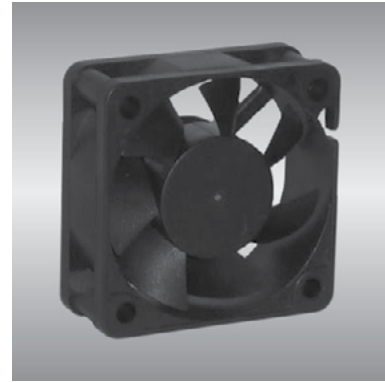


50 AG series

x50x20mm



General Specifications

- Motor : 4 Poles brushless DC motor
- Frame & Impeller : Plastic(UL 94V-0)
- Storage temperature : -40° to +75°
- Operating temperature : -10° to +70°

Major Characteristic Parameters

Model	*Bearing System	Rated Voltage	Operating Voltage Range	Rated Current	Rated Speed	Maximum Air Flow		Maximum Static Pressure		Sound Level	Weight
Part NO.	B / S / F	V	V	A	RPM	m ³ /min	CFM	mm-H ₂ O	In-H ₂ O	dBA	g
AGE05020_12I	B / S	12	7.0~13.2	0.10	4000	0.29	10.1	2.42	0.10	24.0	24
AGE05020_24I	B / S	24	14.0~26.4	0.07	4000	0.29	10.1	2.42	0.10	24.0	24
AGE05020_12J	B / S	12	7.0~13.2	0.13	4800	0.36	12.7	3.48	0.14	28.0	24
AGE05020_24J	B / S	24	14.0~26.4	0.08	4800	0.36	12.7	3.48	0.14	28.0	24
AGE05020_12L	B / S	12	7.0~13.2	0.15	5600	0.42	14.8	4.62	0.18	32.0	24
AGE05020_24L	B / S	24	14.0~26.4	0.10	5600	0.42	14.8	4.62	0.18	32.0	24
AGE05020_12M	B / S	12	7.0~13.2	0.21	6400	0.50	17.6	6.44	0.25	36.0	24
AGE05020_24M	B / S	24	14.0~26.4	0.12	6400	0.50	17.6	6.44	0.25	36.0	24
AGE05020_12H	B / S	12	7.0~13.2	0.21	7000	0.57	20.3	7.70	0.30	36.0	24
AGE05020_24H	B / S	24	14.0~26.4	0.12	7000	0.57	20.3	7.70	0.30	36.0	24

*Bearing system B: Two Ball Bearing F: Fluid Bearing S: Sleeve Bearing

