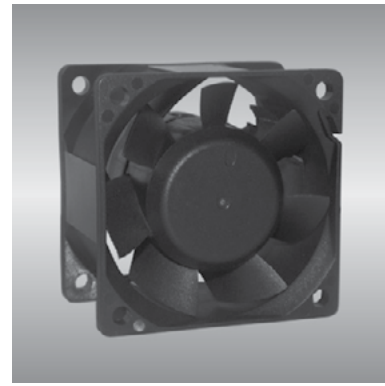


# 60 AG series

x60x38mm



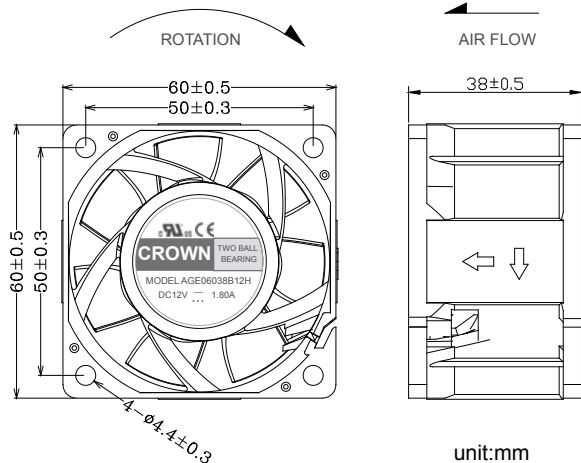
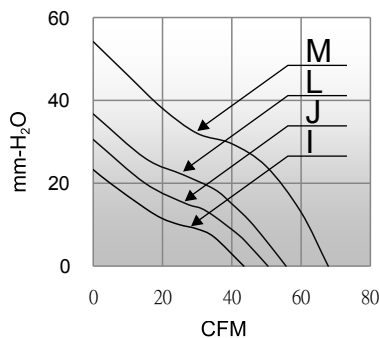
## General Specifications

- Motor : 4 Poles brushless DC motor
- Frame & Impeller : Plastic(UL 94V-0)
- Storage temperature : -40° to +75°
- Operating temperature : -10° to +70°

## Major Characteristic Parameters

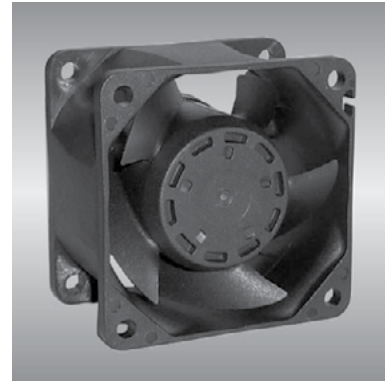
Model	*Bearing System	Rated Voltage	Operating Voltage Range	Rated Current	Rated Speed	Maximum Air Flow		Maximum Static Pressure		Sound Level	Weight
Part NO.	B / S / F	V	V	A	RPM	m <sup>3</sup> /min	CFM	mm-H <sub>2</sub> O	In-H <sub>2</sub> O	dBA	g
AGB06038B12I	B / S	12	7.0~13.2	0.52	8000	1.22	43.1	22.9	0.90	51.0	145
AGB06038B24I	B / S	24	14.0~26.4	0.22	8000	1.22	43.1	22.9	0.90	51.0	145
AGB06038B48I	B / S	48	28.0~56.0	0.20	8000	1.41	50.0	30.0	1.18	53.5	145
AGB06038B12J	B / S	12	7.0~13.2	0.68	9000	1.41	50.0	30.0	1.18	53.5	145
AGB06038B24J	B / S	24	14.0~26.4	0.40	9000	1.41	50.0	30.0	1.18	53.5	145
AGB06038B12L	B / S	12	7.0~13.2	0.90	10000	1.52	55.2	35.8	1.41	57.0	145
AGB06038B24L	B / S	24	14.0~26.4	0.53	10000	1.52	55.2	35.8	1.41	57.0	145
AGB06038B12M	B / S	12	7.0~13.2	1.38	12000	1.90	67.3	52.6	2.07	61.8	145
AGB06038B24M	B / S	24	14.0~26.4	0.54	12000	1.90	67.3	52.6	2.07	61.8	145

\*Bearing system B: Two Ball Bearing F: Fluid Bearing S: Sleeve Bearing



# 60 AG series

x60x38mm



## General Specifications

- Motor : 4 Poles brushless DC motor
- Frame & Impeller : Plastic(UL 94V-0)
- Storage temperature : -40° to +75°
- Operating temperature : -10° to +70°

## Major Characteristic Parameters

Model	*Bearing System	Rated Voltage	Operating Voltage Range	Rated Current	Rated Speed	Maximum Air Flow		Maximum Static Pressure		Sound Level	Weight
Part NO.	B / S / F	V	V	A	RPM	m <sup>3</sup> /min	CFM	mm-H <sub>2</sub> O	In-H <sub>2</sub> O	dBA	g
AGK06038B12I	B	12	7.0~13.2	0.12	4000	1.22	43.1	22.9	0.90	51.0	145
AGK06038B12J	B	12	7.0~13.2	0.35	6000	1.22	43.1	22.9	0.90	51.0	145
AGK06038B24J	B	24	14.0~26.4	0.15	6000	1.22	43.1	22.9	0.90	51.0	145
AGK06038B48J	B	48	28.0~56.0	0.09	6000	1.22	43.1	22.9	0.90	51.0	145
AGK06038B12L	B	12	7.0~13.2	0.50	8000	1.41	50.0	30.0	1.18	53.5	145
AGK06038B24L	B	24	14.0~26.4	0.27	8000	1.41	50.0	30.0	1.18	53.5	145
AGK06038B48L	B	48	28.0~56.0	0.14	8000	1.41	50.0	30.0	1.18	53.5	145

\*Bearing system B: Two Ball Bearing F: Fluid Bearing S: Sleeve Bearing

