

80 AG series

x80x38mm



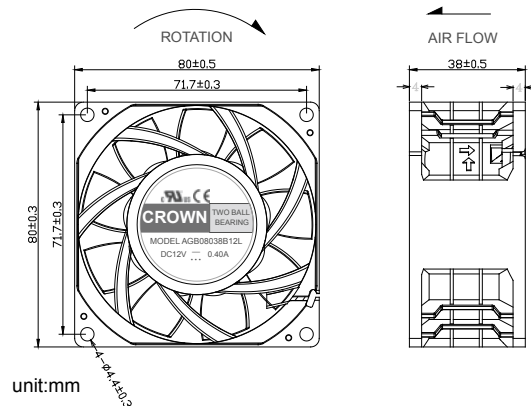
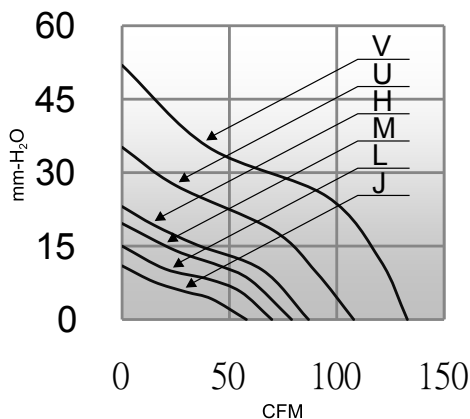
General Specifications

- Motor : 4 Poles brushless DC motor
- Frame & Impeller : Plastic(UL 94V-0)
- Storage temperature : -40° to +75°
- Operating temperature : -10° to +70°

Major Characteristic Parameters

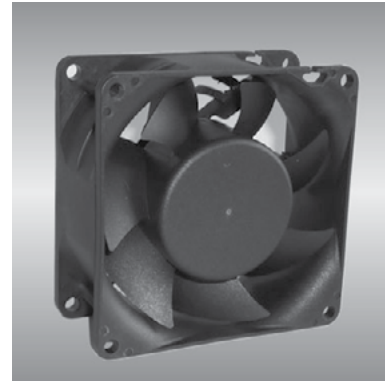
Model	*Bearing System	Rated Voltage	Operating Voltage Range	Rated Current	Rated Speed	Maximum Air Flow		Maximum Static Pressure		Sound Level	Weight
Part NO.	B / S / F	V	V	A	RPM	m ³ /min	CFM	mm-H ₂ O	In-H ₂ O	dBA	g
AGB08038_12J	B	12	7.0~13.2	0.40	4200	1.65	58.2	10.4	0.41	45.0	210
AGB08038_24J	B	24	14.0~26.4	0.20	4200	1.65	58.2	10.4	0.41	45.0	210
AGB08038_48J	B	48	28.0~56.0	0.10	4200	1.65	58.2	10.4	0.41	45.0	210
AGB08038_12M	B	12	7.0~13.2	0.60	5200	2.23	78.8	19.3	0.76	53.0	210
AGB08038_24M	B	24	14.0~26.4	0.35	5200	2.23	78.8	19.3	0.76	53.0	210
AGB08038_48M	B	48	28.0~56.0	0.20	5200	2.23	78.8	19.3	0.76	53.0	210
AGB08038_12H	B	12	7.0~13.2	1.00	6100	2.40	84.8	22.7	0.89	56.0	210
AGB08038_24H	B	24	14.0~26.4	0.45	6100	2.40	84.8	22.7	0.89	56.0	210
AGB08038_48H	B	48	28.0~56.0	0.26	6100	2.40	84.8	22.7	0.89	56.0	210
AGB08038_12U	B	12	7.0~13.2	1.50	7500	2.99	105.5	34.5	1.36	62.0	210
AGB08038_24U	B	24	14.0~26.4	0.78	7500	2.99	105.5	34.5	1.36	62.0	210
AGB08038_48U	B	48	28.0~56.0	0.45	7500	2.99	105.5	34.5	1.36	62.0	210
AGB08038_12V	B	12	7.0~13.2	2.7	9000	3.68	130.0	50.9	2.00	65.5	210
AGB08038_24V	B	24	14.0~26.4	1.20	9000	3.68	130.0	50.9	2.00	65.5	210

*Bearing system B: Two Ball Bearing F: Fluid Bearing S: Sleeve Bearing



80 AG series

x80x38mm



General Specifications

- Motor : 4 Poles brushless DC motor
- Frame & Impeller : Plastic(UL 94V-0)
- Storage temperature : -40° to +75°
- Operating temperature : -10° to +70°

Major Characteristic Parameters

Model	*Bearing System	Rated Voltage	Operating Voltage Range	Rated Current	Rated Speed	Maximum Air Flow		Maximum Static Pressure		Sound Level	Weight
Part NO.	B / S / F	V	V	A	RPM	m ³ /min	CFM	mm-H ₂ O	In-H ₂ O	dBA	g
AGK08038_12L	B	12	7.0~13.2	0.30	4200	1.65	58.2	10.4	0.41	45.0	210
AGK08038_24L	B	24	14.0~26.4	0.16	4200	1.65	58.2	10.4	0.41	45.0	210
AGK08038_48L	B	48	28.0~56.0	0.09	4200	1.65	58.2	10.4	0.41	45.0	210
AGK08038_12M	B	12	7.0~13.2	0.55	5200	2.23	78.8	19.3	0.76	53.0	210
AGK08038_24M	B	24	14.0~26.4	0.28	5200	2.23	78.8	19.3	0.76	53.0	210
AGK08038_48M	B	48	28.0~56.0	0.16	5200	2.23	78.8	19.3	0.76	53.0	210
AGK08038_12H	B	12	7.0~13.2	0.75	6100	2.40	84.8	22.7	0.89	56.0	210
AGK08038_24H	B	24	14.0~26.4	0.4	6100	2.40	84.8	22.7	0.89	56.0	210
AGK08038_48H	B	48	28.0~56.0	0.25	6100	2.40	84.8	22.7	0.89	56.0	210

*Bearing system B: Two Ball Bearing F: Fluid Bearing S: Sleeve Bearing

