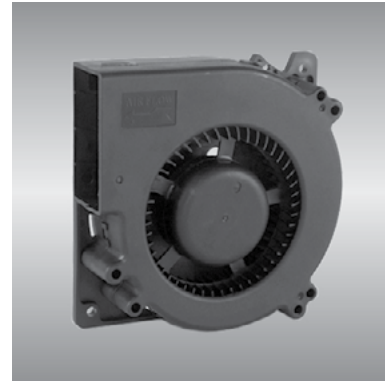


# G<sup>120</sup> BG series

x120x32mm



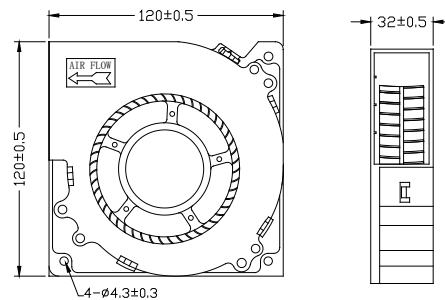
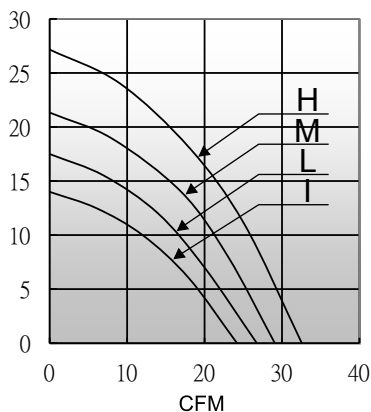
## General Specifications

- Motor : 4 Poles brushless DC motor
- Frame & Impeller : Plastic(UL 94V-0)
- Storage temperature : -40° to +75°
- Operating temperature : -10° to +70°

## Major Characteristic Parameters

| Model        | Bearing System | Rated Voltage | Operating Voltage Range | Rated Current | Rated Speed | Maximum Air Flow    |       | Maximum Static Pressure |                     | Sound Level | Weight |
|--------------|----------------|---------------|-------------------------|---------------|-------------|---------------------|-------|-------------------------|---------------------|-------------|--------|
| Part NO.     | B / S / F      | V             | V                       | A             | RPM         | m <sup>3</sup> /min | CFM   | mm-H <sub>2</sub> O     | In-H <sub>2</sub> O | dBA         | g      |
| BGE12032_12I | B              | 12            | 7.0~13.2                | 0.28          | 2100        | 0.69                | 24.20 | 14.00                   | 0.55                | 48.0        | 180    |
| BGE12032_12L | B              | 12            | 7.0~13.2                | 0.38          | 2300        | 0.76                | 26.75 | 17.50                   | 0.69                | 52.4        | 180    |
| BGE12032_12M | B              | 12            | 7.0~13.2                | 0.47          | 2500        | 0.82                | 29.00 | 21.40                   | 0.84                | 58.5        | 180    |
| BGE12032_12H | B              | 12            | 7.0~13.2                | 0.60          | 2800        | 0.92                | 32.39 | 27.12                   | 1.07                | 62.5        | 180    |

\*Bearing system B: Two Ball Bearing F: Fluid Bearing S: Sleeve Bearing



unit:mm