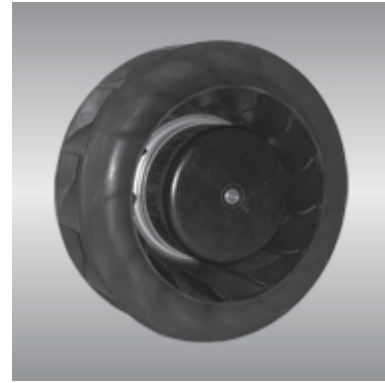


∅ 190 BG series

x69mm



■ General Specifications

- Motor : 8 Poles brushless DC motor
- Frame & Impeller : Al die casting & plastic

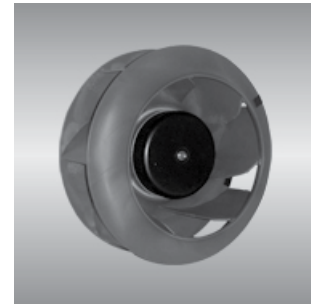
■ Major Characteristic Parameters

Model	Bearing System	Rated Voltage	Operating Voltage Range	Rated Current	Rated Speed	Maximum Air Flow	Maximum Static Pressure	Sound Level	Weight		
Part NO.	B / S / F	V	V	A	RPM	m ³ /min	CFM	mm-H ₂ O	In-H ₂ O	dBA	Kg
BGN19069B28U	B	24	16~28	3.5	3000	1.81	325	46	9.20	62	1.33
BGN19069B48U	B	48	36~56	1.8	3000	1.81	325	46	9.20	62	1.33

EC Impellers are available for dia 190 impeller

∅ 225 BG series

x99mm



■ General Specifications

- Motor : 8 Poles brushless DC motor
- Frame & Impeller : Al die casting & plastic

■ Major Characteristic Parameters

Model	Bearing System	Rated Voltage	Operating Voltage Range	Rated Current	Rated Speed	Maximum Air Flow	Maximum Static Pressure	Sound Level	Weight		
Part NO.	B / S / F	V	V	A	RPM	m ³ /min	CFM	mm-H ₂ O	In-H ₂ O	dBA	Kg
BGN22599B24M	B	24	16~28	4.5	2500	16.77	592	59.2	2.33	68	1.81
BGN22599B48M	B	48	36~56	2.3	2500	16.77	592	59.2	2.33	68	1.81
BGN22599B48H	B	48	36~56	4.0	3100	20.79	734	73.2	2.88	84	1.81

*Bearing system B: Two Ball Bearing F: Fluid Bearing S: Sleeve Bearing

EC Impellers are available for dia 225 impeller