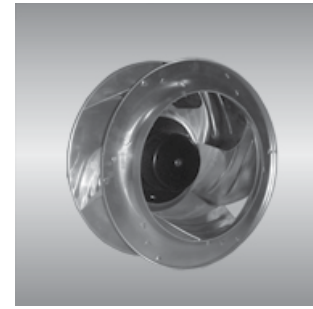


∅ 310 BG series

x150mm



■ General Specifications

- Motor : 8 Poles brushless DC motor
- Frame & Impeller : Al die casting & plastic

■ Major Characteristic Parameters

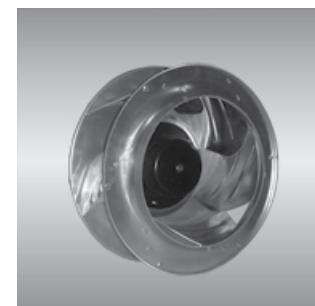
Model	Bearing System	Rated Voltage	Operating Voltage Range	Rated Current	Rated Speed	Maximum Air Flow	Maximum Static Pressure	Sound Level	Weight		
Part NO.	B / S / F	V	V	A	RPM	m ³ /min	CFM	mm-H ₂ O	In-H ₂ O	dBA	Kg
BGN310150B24H	B	24	16~28	5.2	1600	30.50	1077	47.1	1.85	57	2.88
BGN310150B48H	B	48	36~56	3.0	1600	30.50	1077	47.1	1.85	57	2.88

*Bearing system B: Two Ball Bearing F: Fluid Bearing S: Sleeve Bearing

EC Impellers are available for
dia 310 impeller

∅ 404 BG series

x157mm



■ General Specifications

- Motor : 8 Poles brushless DC motor
- Frame & Impeller : Al die casting & plastic

■ Major Characteristic Parameters

Model	Bearing System	Rated Voltage	Operating Voltage Range	Rated Current	Rated Speed	Maximum Air Flow	Maximum Static Pressure	Sound Level	Weight		
Part NO.	B / S / F	V	V	A	RPM	m ³ /min	CFM	mm-H ₂ O	In-H ₂ O	dBA	Kg
BGN404158B48M	B	48	36~56	4.2	1300	51.00	1801	50.4	1.98	57	2.88

*Bearing system B: Two Ball Bearing F: Fluid Bearing S: Sleeve Bearing

EC Impellers are available for
dia 440 impeller