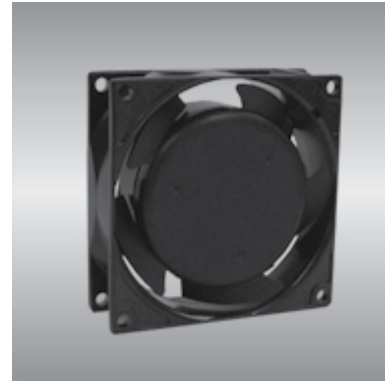


# 80 IG series

x80x25mm



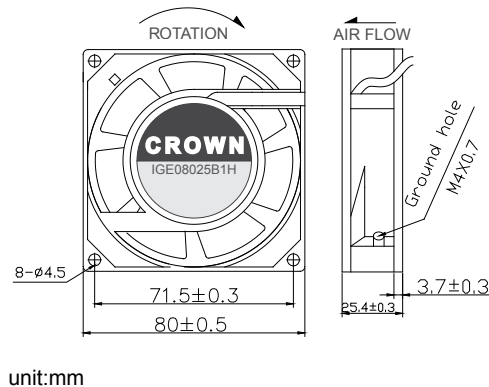
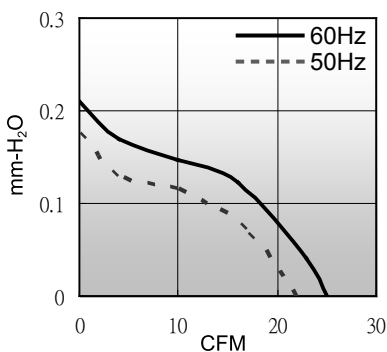
## General Specifications

- Motor : Shaded pole AC motor
- Frame & Impeller : Al Die-casting & PBT plastic
- Storage temperature : -40°C to +75°C
- Operating temperature : -10°C to +70°C

## Major Characteristic Parameters

Model	Bearing System	Rated Voltage	Freq.	Power Input	Rated Speed	Maximum Air Flow	Maximum Static Pressure	Sound Level	Weight		
Part NO.	B / S	V	Hz	W	RPM	m <sup>3</sup> /min	CFM	mm-H <sub>2</sub> O	In-H <sub>2</sub> O	dBA	Kg
I GE08025_1H	B / S	110	50/60	13/11	2500/3000	0.62/0.71	22/25	4.5/5.3	0.18/0.21	28/29	0.26
I GE08025_2H	B / S	230	50/60	13/11	2500/3000	0.62/0.71	22/25	4.5/5.3	0.18/0.21	28/29	0.26

\*Bearing system B: Two Ball Bearing F: Fluid Bearing S: Sleeve Bearing



# 80 IG series

x80x25mm



## General Specifications

- Motor : EC motor
- Frame & Impeller : PBT plastic
- Storage temperature : -40°C to +75°C
- Operating temperature : -10°C to +70°C

## Major Characteristic Parameters

Model	Bearing System	Rated Voltage	Freq.	Power Input	Rated Speed	Maximum Air Flow	Maximum Static Pressure	Sound Level	Weight		
Part NO.	B / S	V	Hz	W	RPM	m <sup>3</sup> /min	CFM	mm-H <sub>2</sub> O	In-H <sub>2</sub> O	dBA	Kg
IGG08025_1H	B	110	50/60	3.6	3200	1.13	40	3.5	0.15	33	0.26
IGG06025_2H	B	230	50/60	4.6	3200	1.13	40	3.5	0.15	33	0.26

\*Bearing system B: Two Ball Bearing F: Fluid Bearing S: Sleeve Bearing

