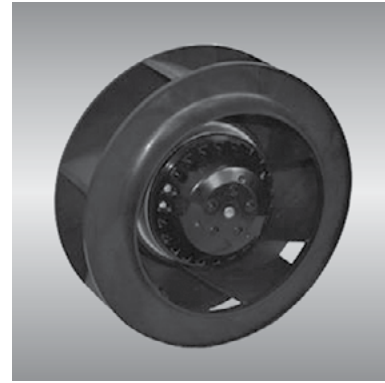


Ø190 JG series

x68.5mm



General Specifications

- Material :Impeller:Plastic; Frame:Al Alloy
- Lead Wires:Wire
- Insulation class:F
- Air Flow direction:Inlet looking at motor
- Storage temperature : -40°C to +75°C
- Operating temperature : -10°C to +70°C

Major Characteristic Parameters

Model	Bearing System	Rated Voltage	Freq.	Power Input	Rated Speed	Maximum Air Flow	Maximum Static Pressure	Sound Level	Weight		
Part NO.	B / S	V	Hz	W	RPM	m ³ /min	CFM	mm-H ₂ O	In-H ₂ O	dBA	Kg
JGE19069B2	B	230	50	64	2500	9.17	324	32.77	1.29	64	1.28
JGE19069B2	B	230	60	77	2800	10.45	369	70.1	2.76	67	1.28

*Bearing system B: Two Ball Bearing

