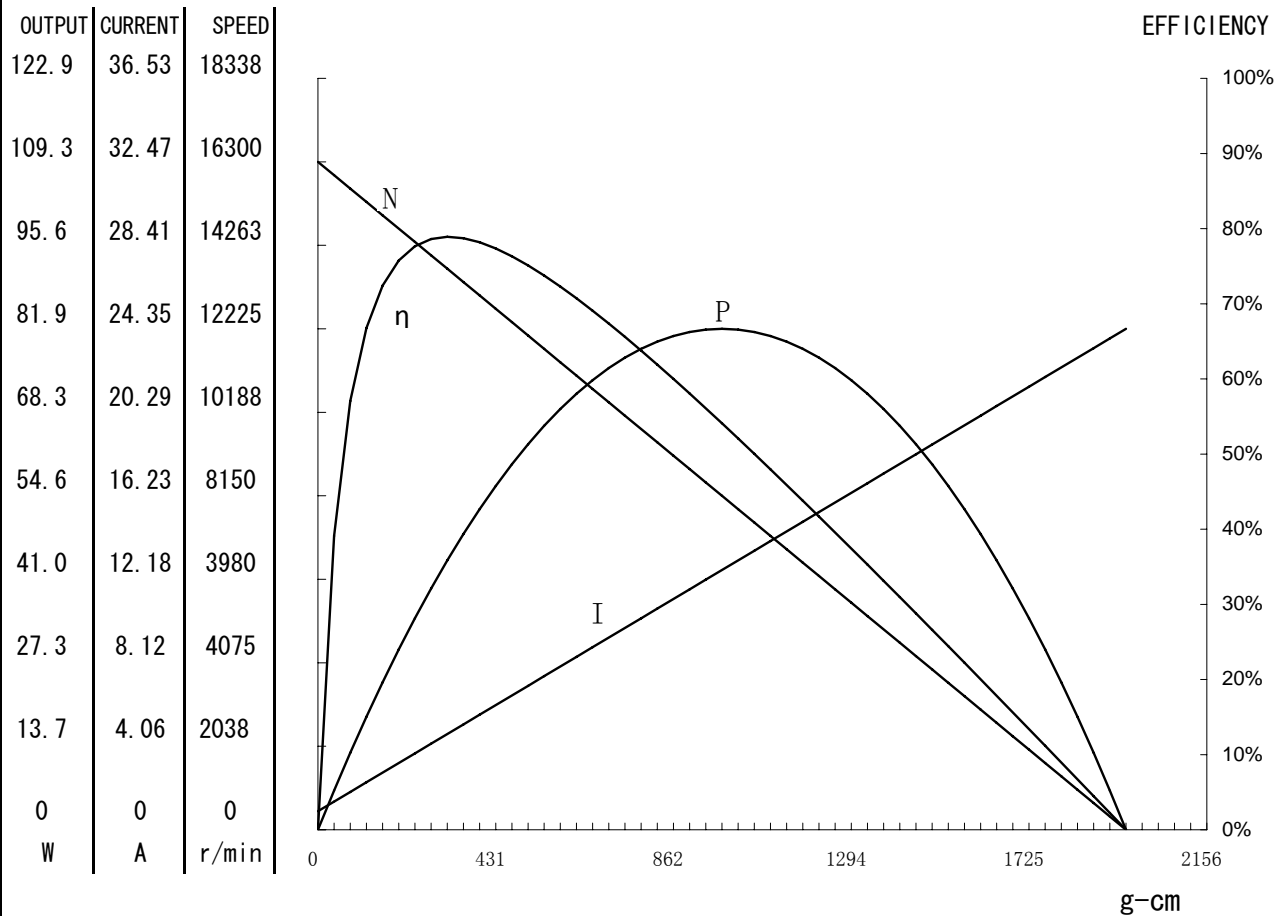


MOTOR CHARACTERISTICS CURVE

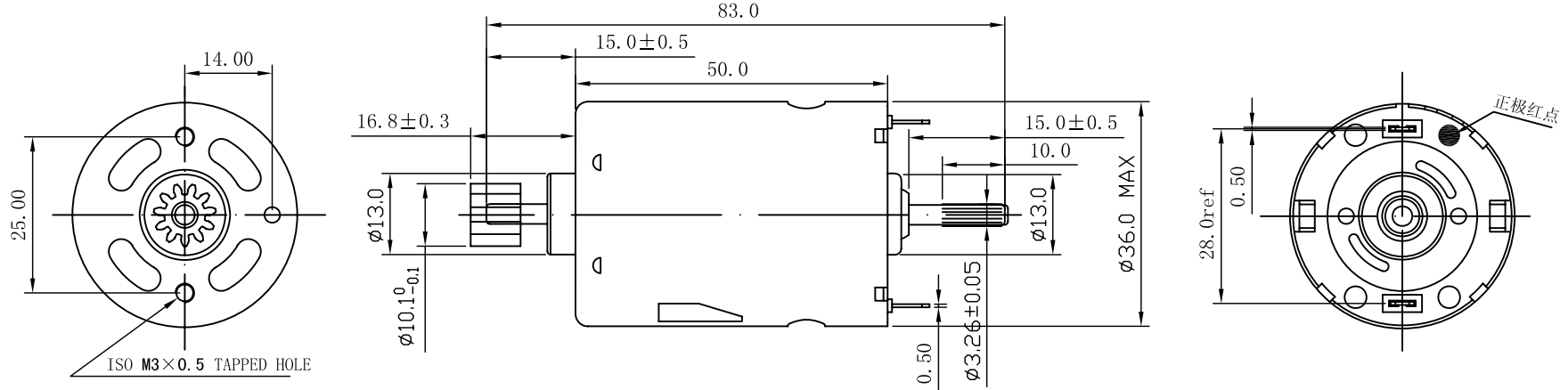
REFERENCE ONLY

电机型号：HRS-540SM-5044-6#

PERFORMANECE			
VOLTAGE	DEPRATING RANGE	V/DC	9-15.0
	VOLTAGE	V/DC	12.0
AT NO LOAD	SPEED	r/min	16300
	CURRENT	A	0.9
A T MAXINUM EFFICIENCY	EFFICIENCY	%	78.92%
	SPEED	r/min	13671
	CURRENT	A	4.68
	TORQUE	g-cm	316.0
	OUTPUT	W	44.32
AT MAX POWER	OUTPUT	W	81.9
	SPEED	r/min	8150
	CURRENT	A	12.63
	TORQUE	g. cm	979.5
AT STALL	TORQUE	g. cm	1960
	CURRENT	A	24.35



DIRECTION OF ROTATION

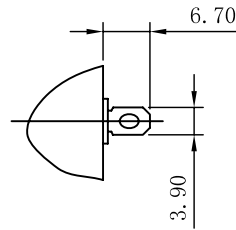


传统齿轮规格如下:

- 1, 齿形: 渐开线
- 2, 齿数: 11
- 3, 模数: 0.75
- 4, 节圆直径: $\phi 8.25$
- 5, 齿根圆: $\phi 7.0$
- 6, 跨齿数: 2
- 7, 跨齿厚度: 3.6635
- 8, 压力角: 20°
- 9, 精度等级: 9
- 10, 齿顶圆角半径: R0.15
- 11, 齿根圆角半径: R0.25

注:

1. 产品符合ROHS要求
2. 性能要求:
 额定电压 DC 12V
 空载转速 15500~17700 RPM
 空载电流 <1.2A
 额定负荷 FAN69x20mm
 额定负载转速 12200~13700 RPM
 额定负载电流 <7.1A
3. *标记为重点尺寸
4. 正极红点标记
5. 轴向间隙: 0.05-0.6MM
6. 高强磁磁石



			制图		比例Scale.	加工, 处理Finish.	客户图号
			Drawn.		1:1		Cus. Draw No.
	新版发行	14.01.10	设计				版本Version
	变更符号Sy	变更内容 Des. of rew.	日期Date	审核	A/0		HRS-540SM-5044
				核准	单位Unit.	mm	制程编号
				Appro.			DM001-30001
							制程名称
							DM002外形图
							Title